



# Notice of Race

And

## Sailing Instructions

### NCYC Mud Island Challenge 2021

Sunday 18th July 2021

**1. Invitation** - NCYC extends an invitation to owners/skippers of eligible yachts to compete in the July 2021 NCYC Mud Island Challenge Yacht Race.

**2. Rules** - The race will be governed by the **COLREGS** and this combined Notice of Race and Sailing Instructions. The Racing Rules of Sailing do **not** apply.

**3a. Eligibility** - All NCYC yachts satisfying the requirements of Maritime Safety Queensland for the type of boat sailing in partially smooth waters and capable of safely completing the course are eligible.

**3b. Skippers** - A Pre-race Safety Briefing of crew by skippers of on-board safety gear, safety rails and MOB throw lines on participating boats is required. It is also a requirement of MSQ for this event that all boats carry a secondary radio or mobile phone to ensure communication may be maintained with the racing fleet and QF3 Redcliffe Volunteer Coast Guard (07 3203 5522)

**4. Special Watch Channels 12 VHF because this race enters shipping channels** - Maritime Safety Queensland requires all participating yachts to be compliant with all licensing and registration conditions required for Queensland. All yachts and participating personnel must also comply with all rules and legislation that are in place for Queensland ships. Participants are to pay particular attention to COLREGS Rule 5 [Look out] and rule 7 [risk of collision]. If in doubt, assume a risk exists and take early and courteous action rule 7a.

Race participants are to be familiar with COLREGS Rule 9 regarding narrow channels.

Race participants are to give way and not hinder any commercial traffic in the shipping channels.

Skippers are to be vigilant for any shipping movements when in or near a shipping channel.

**5. Entry fee** - This is an NCYC member's only event and therefore no entry fee applies.

**6. Entering the event** - Yachts wishing to enter shall do so by logging on via the website. This is preferred. Alternatively, log on to "Race Control" via VHF77 at least 15 min prior to the start.

The short course around the Western Coffee Pot or long course around Mud Island must be nominated when logging on.

**7. Start** - The start for Course 2 boats will be at precisely 9:45am GPS time. The start time for boats doing course 1 with a handicap below .745 will be 09.30am precisely. The start time for boats doing course 1 with a handicap above .745 will be 10:00am. The start line will be at Newport leads with the outer green channel lateral mark in transit with the next inner green lateral mark with a distance of 200 metre to the North of the outer green lateral mark. No signals will be given. Participants shall self-start.

**8a. Around Mud Island Course 1** - The full course for this event will be Start - Newport Leads - Reef Point to starboard - Brisbane Roads isolated danger mark to starboard - Brisbane River entrance western and eastern coffee pots to port. Then rounding Mud Island anticlockwise conforming with all beacons and all cardinal marks of safe water around Mud Island. Then passing, Brisbane River entrance eastern and western coffee pots to starboard. Brisbane Roads to port - Reef Point to port - then to the finish. Refer attached course diagram.

**8b. Short Course 2** – This will not include the Mud Island circumnavigation. Instead, boats will return after rounding the Western Coffee Pot to port - Brisbane Roads to port - Reef Point to port - finish Newport Leads.

Approximate position of rounding marks.

Reef Point	27*11.005S --- 153*07.970E
Brisbane Roads isolated danger mark	27*17.047S --- 153*11.714E
Coffee Pott western lead	27*19.975S --- 153*11.507E

Mud Island all beacons and cardinal marks.

Note: The course map supplied with this notice of race is not to be used for navigation. The naval chart for this area is to be used.

**9. Shortening of course** - A shortened course will be announced via VHF77.

**10. Finish** - The finish will be a north line finish at Newport leads with the outer green channel lateral mark in transit with the nearest green to the south with a distance of 100 metres to the north.

Skippers must record their own finish times and advise Race Control via VHF 77 immediately after finishing.

Note a finishing time limit of 1730 hrs exists for both short and long courses.

**Spinnakers and or extras may be used with a 3% handicap penalty above non spinnaker rated boats for course one around Mud Island. If extras are used it is to be declared when relaying finish times.**

**Course two will be regarded as a separate race with separate prizes with no spinnakers or extras allowed when sailing course two.**

**12. Handicaps** – Handicaps will be assigned to yachts generally in accordance with the guide lines detailed in the NCYC hand book.

Handicaps will be published prior to the event on our web site.

The handicapper's decision will be final.

The result of this event will not affect other event handicaps.

**13. Sailing instructions** - All required sailing instructions are within this document.

It is also a requirement of MARINE SAFETY QUEENSLAND that the PRO for the day contacts Brisbane VTS on channel 12 or 07 3305 1700 when the first boat enters and the last boat leaves the shipping channel.

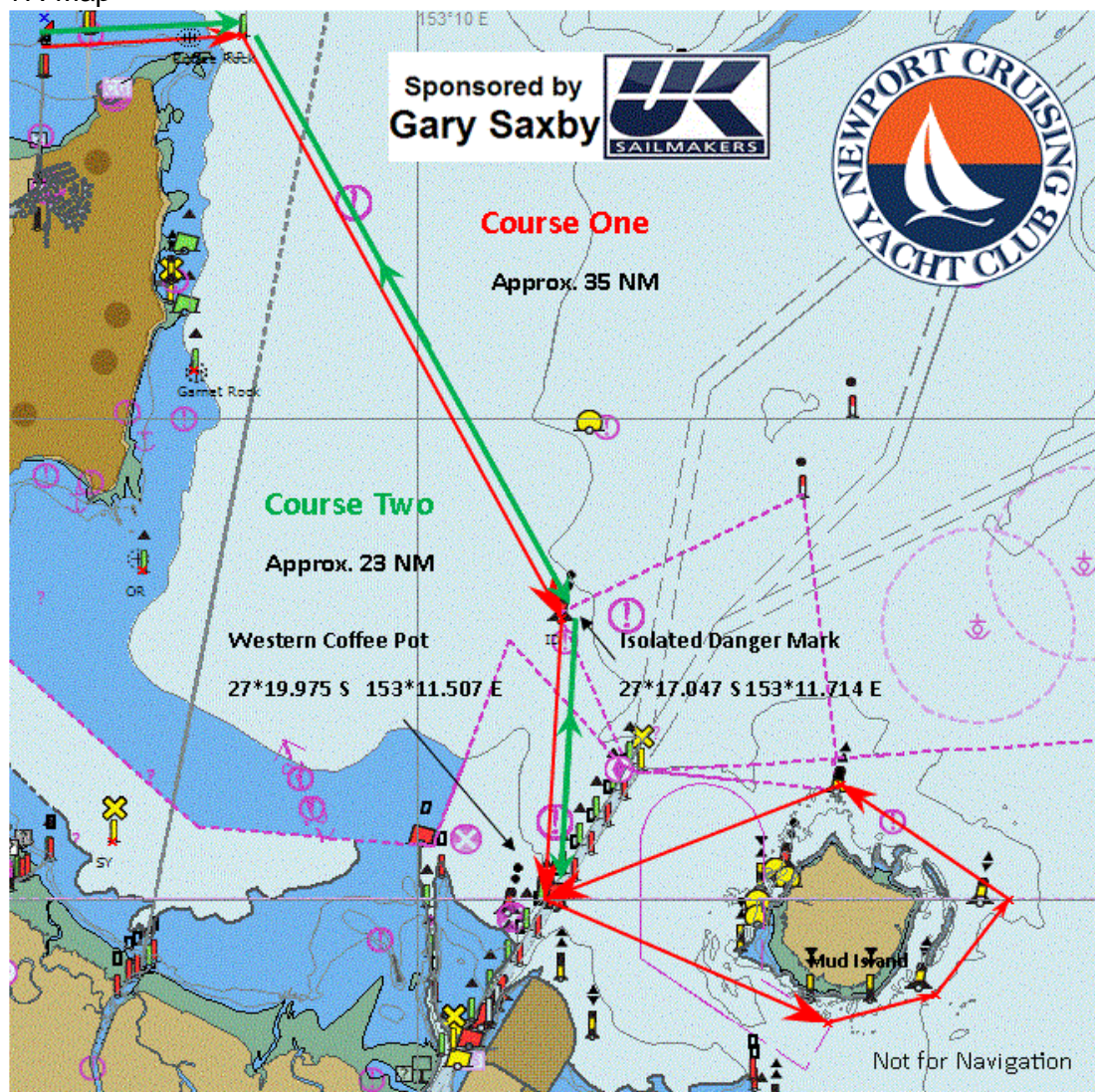
**14. Insurance** – It is a condition of entry that each boat be covered by third party property and public liability insurance of at least \$10,000,000. For those choosing to sail course 1 with or without spinnakers or extras, consideration should be given as to whether your insurance policy covers you for this event. Generally any events where spinnakers are permitted, insurance companies require racing cover. Check your PDS.

**15. Presentation of prizes** - Announcement of results and prize giving will take place after the race at a venue to be announced.

**16. Further Enquiries.**

P.R.O: John Hynes 0488 995 535

**17. Map**



Many Thanks to our Sponsor Gary Saxby and UK Sailmakers Brisbane.