



CRUISING AT SUNSET (CAS) SAILING INSTRUCTIONS

including post event information

All Cruising At Sunset events are run under the rules as determined by the WAGS, SAGS & CAS Sailing Manual with exceptions or in addition to those rules as follows:

- 1.** All participating boats, including visitor boats, must log on (Ch 77) with the designated race coordinator.
- 2.** The designated race coordinator shall be the Social Sailing coordinator or his/her appointee on the day.
- 3.** The Start Line is at Newport Outer Leads as per WAGS, SAGS & CAS Manual.
- 4.** The Finish line is at Newport Outer Leads as per WAGS, SAGS & CAS Manual.
- 5.** No extras are allowed.
- 6.** Auto pilots may be used during the race.
- 7.** The Course:
 - 7.1** Start line, Reef Point to port (RP), Deception Bay Fisheries Beacon to port (BMF), Finish line.
 - 7.2** The course, start and finish lines may be varied at the coordinator's discretion to suit conditions on the day.
 - 7.3** Often the course will be to QCYC. See map below
- 8.** Prizes will generally be awarded as per WAGS, SAGS and CAS Manual but may be varied in consultation with the place-getters.

9. Start Times for the Cruising at Sunset race will be in the form of a timesheet adjusted for each race to permit boats to return before last light.

10. Cancellation of Race:

10.1 A Cruising at Sunset race shall be cancelled if the race coordinator on the day considers it would be unsafe to start or continue the race. The post-race dinner will take place even if the race is cancelled.

11. Post-race Dinner:

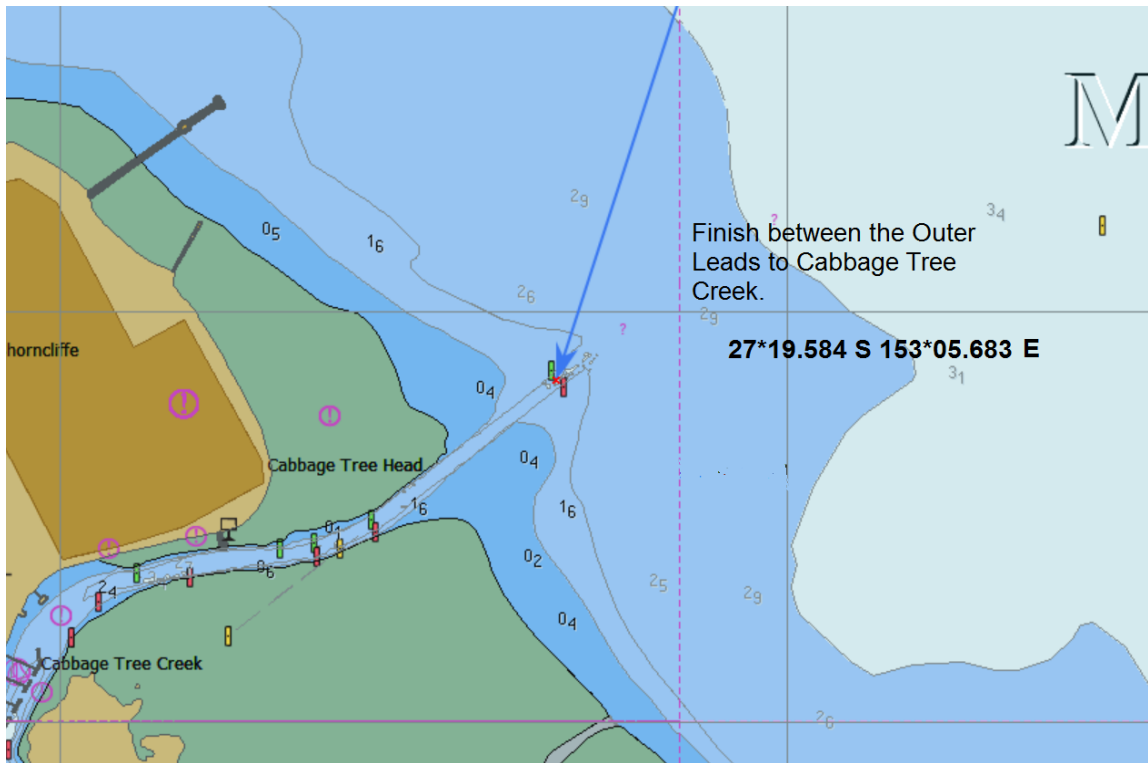
11.1 All members and friends whether they have been racing or not are encouraged to meet for dinner at a location to be determined before each event.

11.2 To assist with catering please advise the SSC verbally or by email if you intend meeting for dinner.

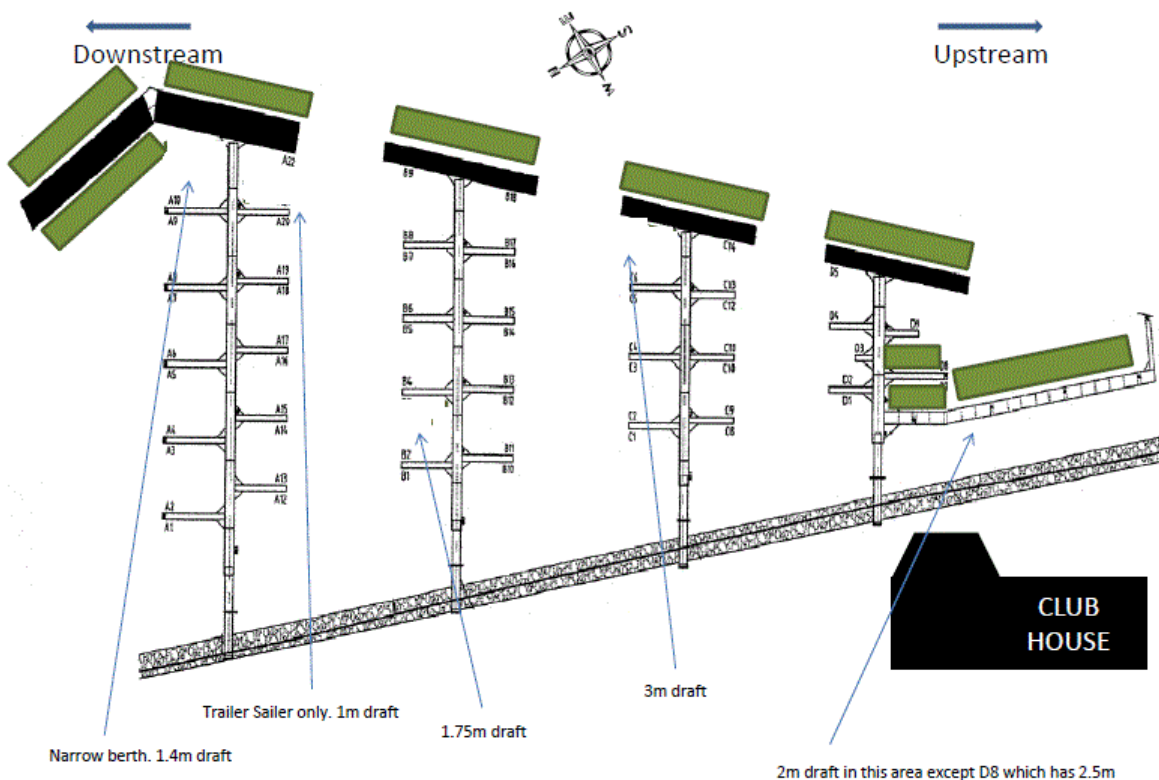
11.3 Unless advised otherwise any post-race dinner held at the Clubhouse will be self-catered.

These are the details for the race to QCYC





WARNING. Consider Tides when you plan your arrival and departure. Currents may be strong. Taking an outer berth may be advisable if in doubt.



Availability not Current-for indication only